



CT23BM20

## Double DIN Fitting Kit for BMW Vehicles



### IN THE KIT

- i. Double DIN Fascia Panel
- ii. Stereo Brackets (R/L)
- iii. Screws (x8)
- iv. Clips (x2)



### APPLICATION

Note: Application data is subject to change at any time

**BMW 1 Series (F20/21) 2012 - 2016**  
**BMW 2 Series (F22/23/87) 2014>**

Note: To correctly install this fitting kit, one of the following interfaces is recommended in order to retain OEM features and relocate the OEM head unit (NB: Works with NBT vehicles only (not NBT Evo):

For amplified vehicles	CTSMB015.2
For non-amplified vehicles	CTSMB014.2

### RECOMMENDED TOOLS

- Panel Removal Tool
- Screwdriver
- Cutting Tool

### FEATURES

- Allows for the installation of a double DIN aftermarket stereo
- Retains OEM climate controls
- Retains ambient ashtray light (if vehicle is equipped)
- Includes mounting brackets and fitting accessories
- Finished in black to match vehicle dashboard

#### DISCLAIMER

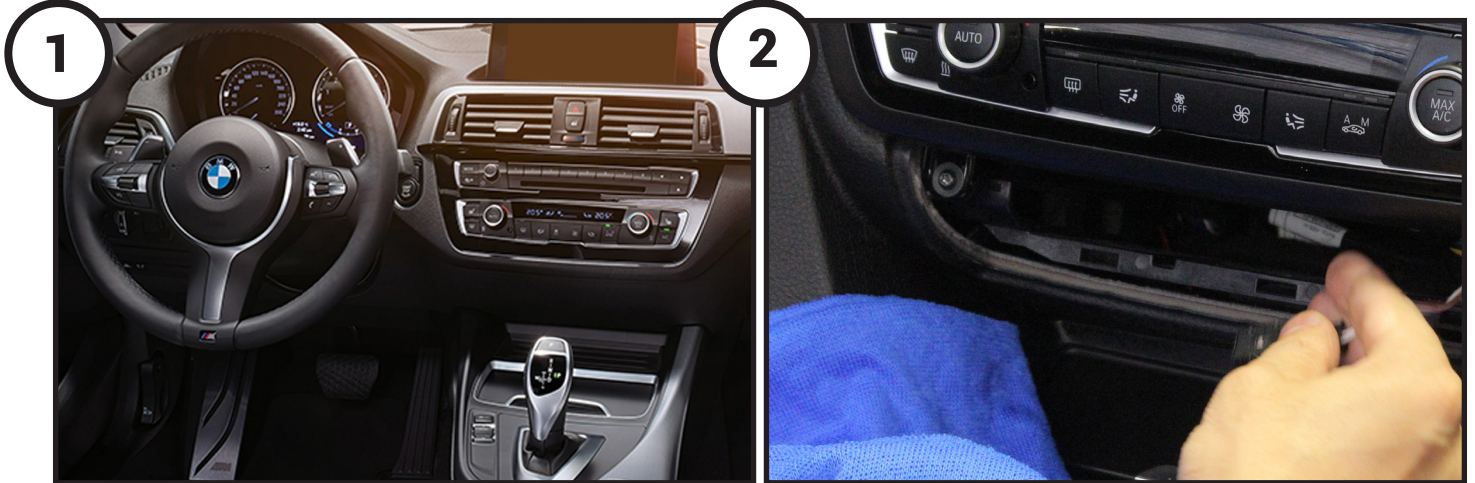
The information provided in this document is subject to change without notice due to manufacturer changes and/or improvements to the product/s. This instruction manual is based on documented data and research. The manufacturer of this product cannot be held responsible for any changes made to the vehicle by the manufacturer or damages that may occur through the installation of this product in accordance with the steps outlined herein.

# PRIOR TO INSTALLATION

Read the manual prior to installation. Technical knowledge is necessary for installation. The place of installation must be free of moisture and away from heat sources. Please ensure that the correct tools are using during the installation to avoid damage to the vehicle or product. Connects2 can not be held responsible for the installation of this product.

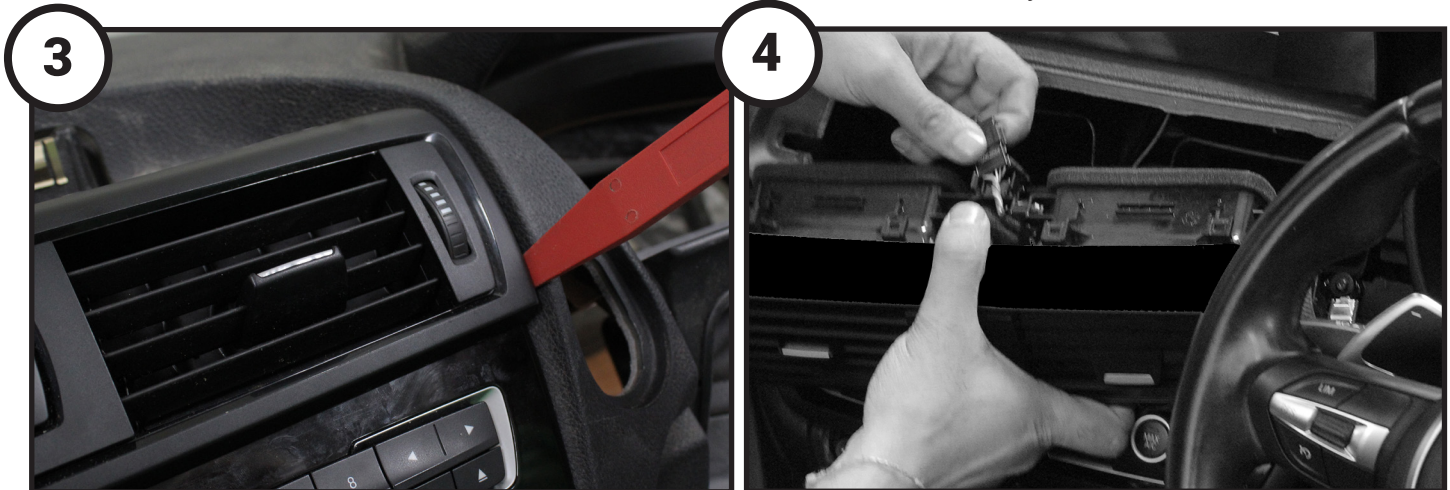
**PLEASE NOTE THAT DASHBOARD MODIFICATION IS REQUIRED IN ORDER TO PROVIDE SPACE FOR THE DOUBLE DIN HEAD UNIT. SEE PAGE 3 FOR MORE DETAILS.**

## INSTALLATION GUIDE



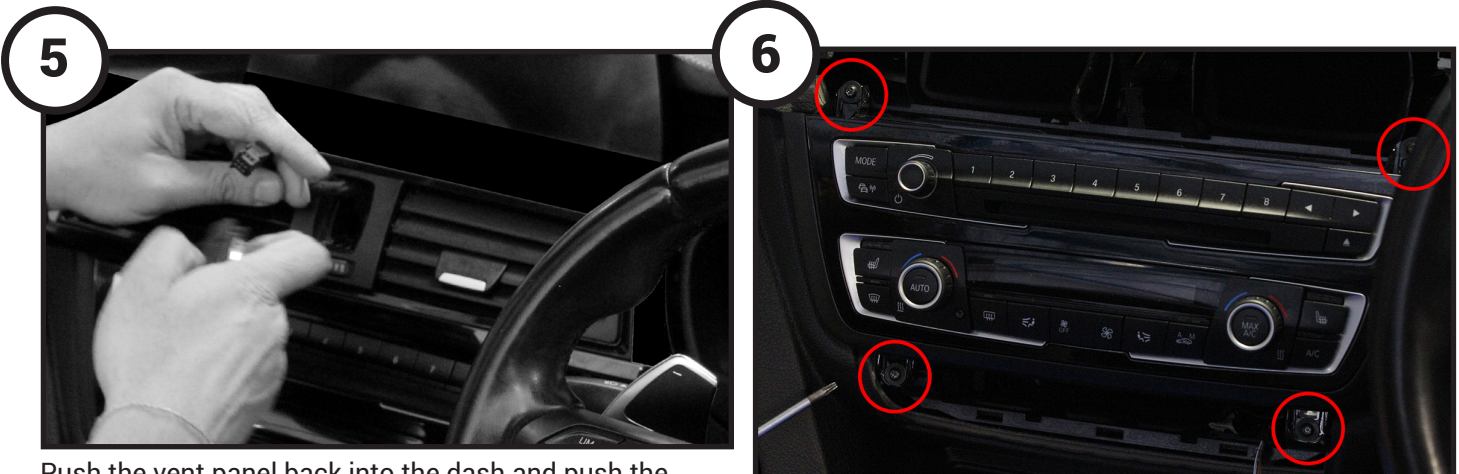
BMW 1 Series OEM Dashboard

Use a panel removal tool to remove the panel below the climate control assembly and disconnect the cable



Use a panel removal tool to release the air vents and partially remove

Once the vent panel is loose, pull it out of the dash enough to disconnect the cable at the back of the panel



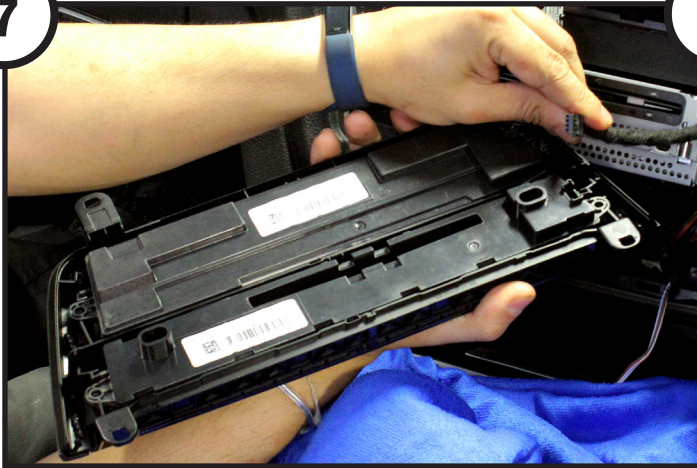
Push the vent panel back into the dash and push the hazard warning button out. Disconnect the button and fully remove the air vent panel/vents

Use a screwdriver to remove the four screws that surround the climate control panel (circled)



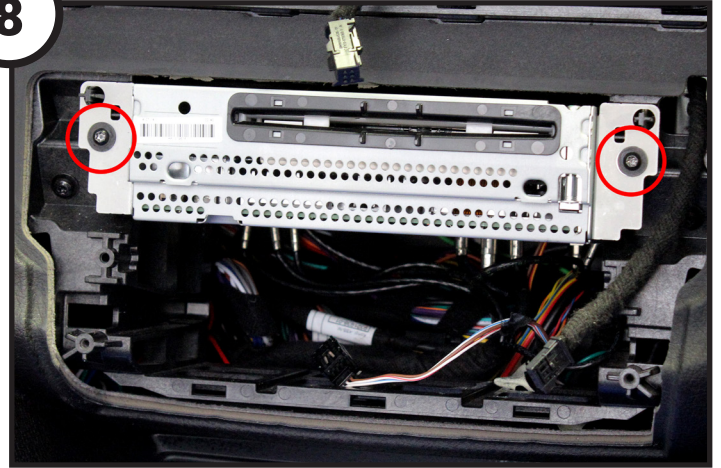
# INSTALLATION GUIDE

7



Pull out and disconnect the OEM radio button panel

8



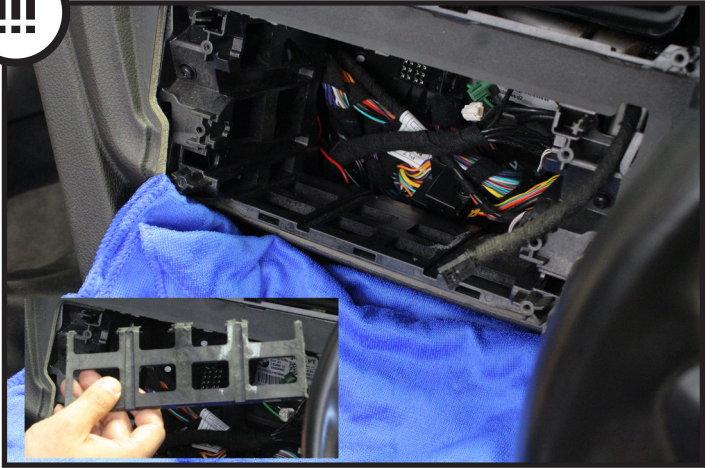
Use a screwdriver to remove the two screws on the right and left sides of the OEM head unit.

9



Remove the OEM head unit and disconnect all wiring to the unit. At this stage, the OEM head unit should be relocated into a suitable location at the rear of the vehicle.

!!!



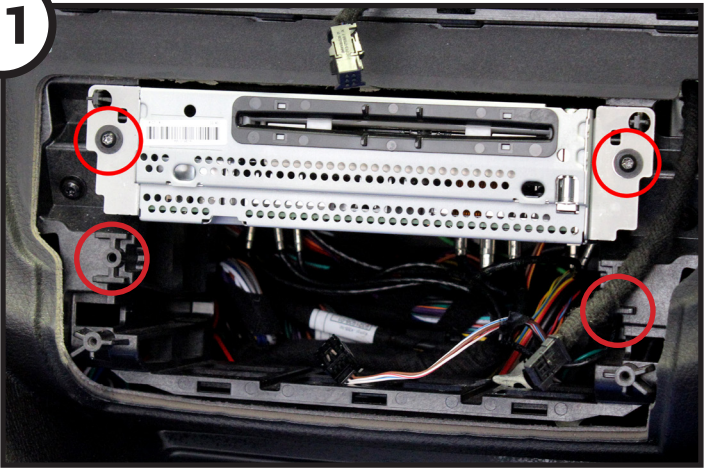
Use a cutting tool to remove the gridded plastic shelf from the bottom of the head unit cavity. See above image to see removed piece (bottom left) as well as the cavity post-modification.

10



Relocate the climate control button panel into the new double DIN fascia panel, ensuring that the middle clip is lined up for a perfect fit

11



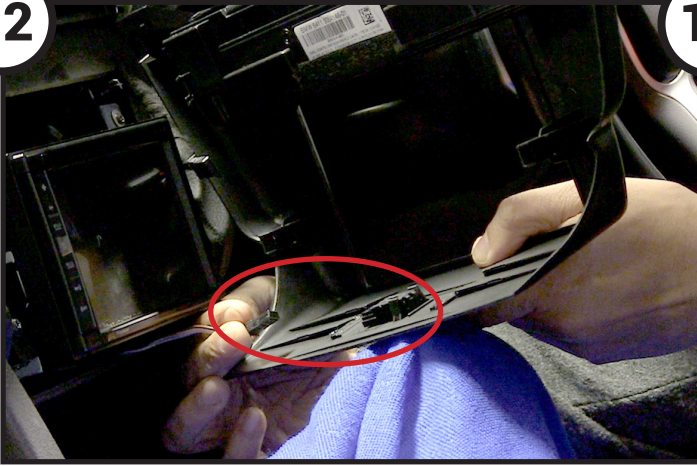
Screw the left and right brackets included in the kit onto each side of the aftermarket radio, and screw into the dashboard using the OEM head unit locations (illustrated above using image from disassembly)

Need help? Visit [support.connects2.com/tickets/technical](https://support.connects2.com/tickets/technical)



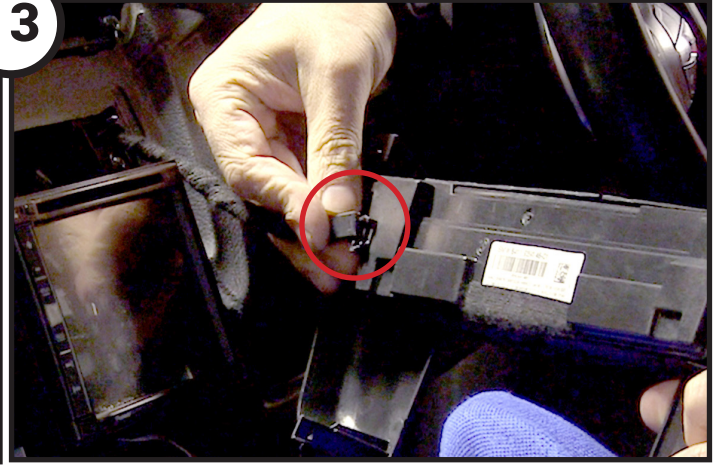
# INSTALLATION GUIDE

12



If the OEM panel has an LED located above the ashtray, remove this from the panel and slot it into the housing provided in the new panel to retain the ashtray light.

13



Reconnect the climate control button panel and attach the two clips included in the kit to the locations on the back of the double DIN fascia

14



Fit the fascia into place around the stereo, using the clips to guide it into place. Screw into the dash using the OEM screws and locations. Reassemble dash in reverse order of disassembly to complete the installation.