

FORD RANGER, EVEREST 2015>

(Flat Black. Not for Vehicles with SYNC3 8" Touchscreen)



Tools Required: _____

- Panel Removal Tool/s
- Screwdriver/s

DISCLAIMER

This instruction booklet is based on carefully documented data and research. Connects2 cannot be held responsible for discrepancies/inconsistencies that may occur due to automobile manufacturing changes, options, or damage that may occur in the vehicle during the installation of components while using this booklet

Need help with your installation? Visit support.connects2.com

STEP ONE

Firstly, use a panel removal tool to remove both of the fans and trim panel from each side of the head unit

**STEP TWO**

Next, remove the panels underneath the A/C controls by hand, followed by the panel situated between the head unit and A/C controls

**STEP THREE**

With the panels removed, use a screwdriver to remove the five screws holding the fascia panel in place

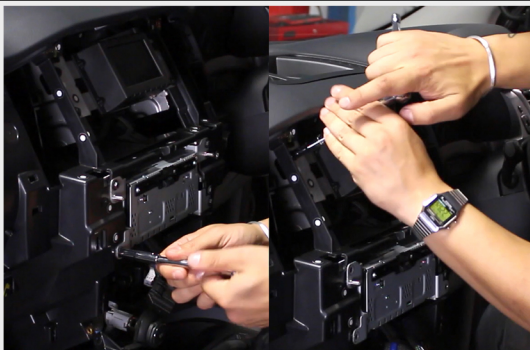
**STEP FOUR**

Once the fascia panel is free, disconnect all wiring to the panel and remove the panel

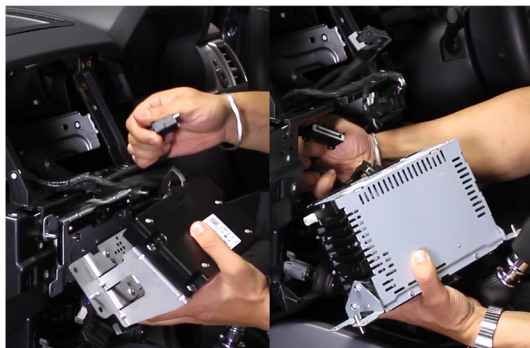


STEP FIVE

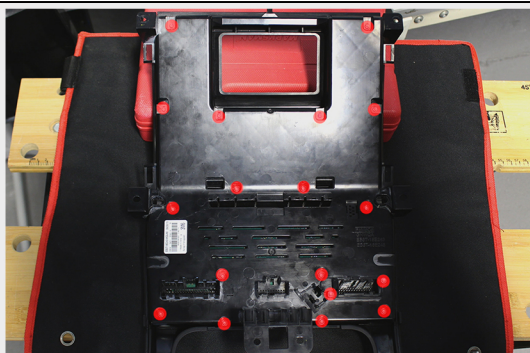
Unscrew the eight screws holding the head unit and top display in place

**STEP SIX**

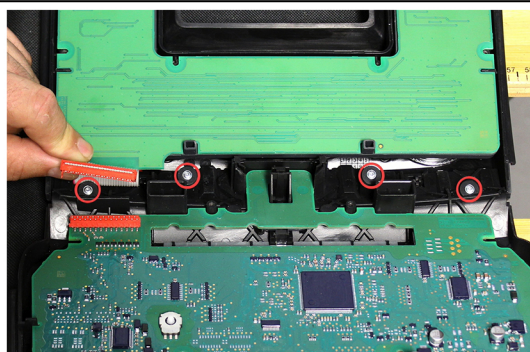
Once the head unit and top display are free, disconnect all wiring to both parts and remove

**STEP SEVEN**

Take the OEM fascia panel and remove all eighteen screws located on the back (circled)

**STEP EIGHT**

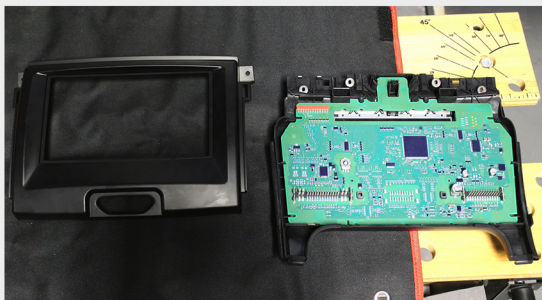
Remove the back of the panel and disconnect the wire which leads from the top board to the A/C panel to reveal a screw. Remove this and the three other screws on the panel to detach the A/C controls from the rest of the panel



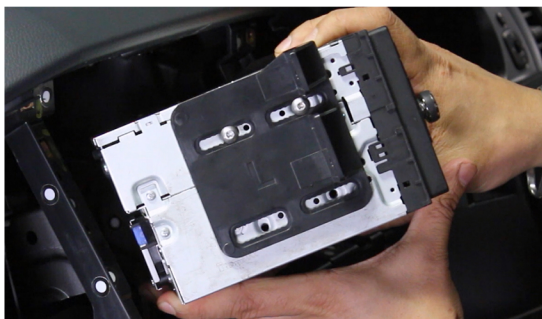
STEP NINE

Insert the new trim piece into the opening in the new fascia panel. Screw the fascia panel to the A/C controls (using the four screws removed in Step Eight) and refit the back of the panel (using the eighteen screws removed in Step Seven)

[NB: At this point, a Connects2 CT2SFO018.2 interface can be connected to retain steering wheel control functionality]

**STEP TEN**

Attach both of the brackets to the aftermarket head unit, using the fascia panel as a guide. Once satisfied with the fit, screw the head unit into the dash

**STEP ELEVEN**

Next, reconnect all connections to the fascia panel and air conditioning assembly and clip into place around the head unit

**STEP TWELVE**

Reattach all remaining trim panels to complete your installation of the CT23FD66 Double DIN Fascia Kit

