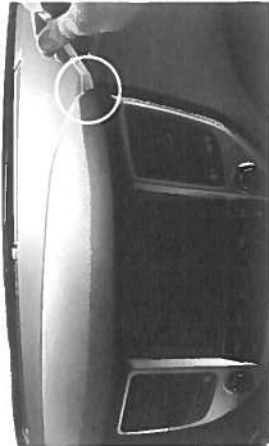
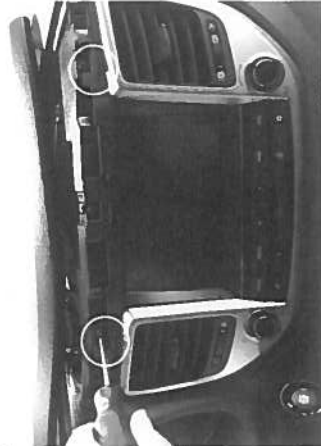


1



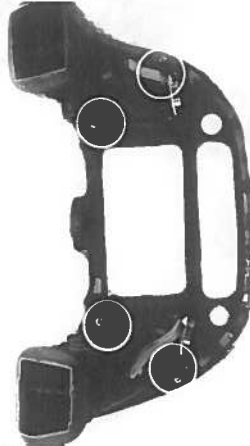
1 Remove the odometer cover frame.

2



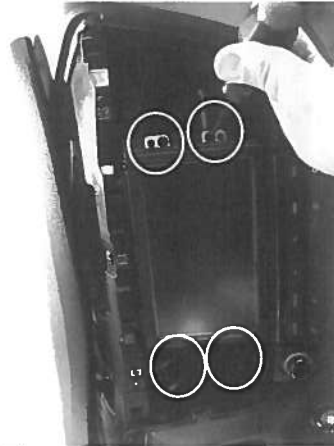
2 Remove the screws and the original fascia plate.

3



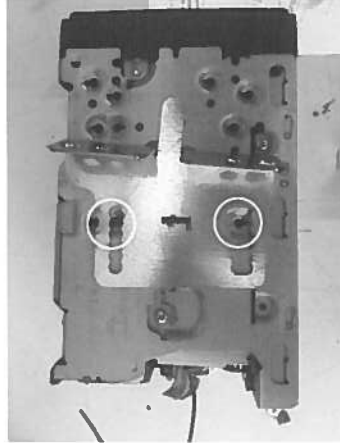
3 Remove the air vents from the original fascia plate and fix them on the aftermarket radio.

4



4 Remove the OEM head unit by unscrewing the circled screws (pay attention to save them) and disconnect all cables.

5



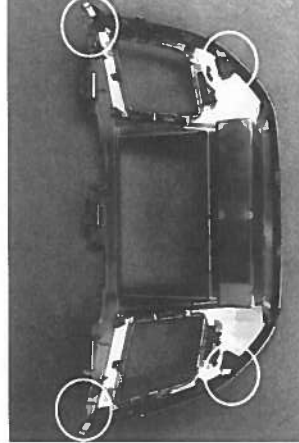
5 Take both left and right brackets and mount them on the aftermarket head unit, each one by using the supplied screws. See the picture for a correct positioning of the screws.

6



6 Connect all cables, verify the proper functioning of the system and insert the head unit into the housing. Fix it with screws you saved before.

7



7 Insert the metal clips as shown in a photo.

8



8 Mount the fascia plate on the dashboard and the odometer cover frame. This is the final result.

Facia plate installation kit for:

HYUNDAI

Model: Tucson

Year: 2015>

Kit content: double DIN facia plate
mounting brackets + screws

Compatibility: Compatible with double DIN devices

Customer code:



INSTALLATION MANUAL