



...connecting to the aftermarket

CT23RT09

Renault Trafic 2015 >



INSTRUCTION MANUAL

www.connects2.com

Designed and
Engineered
in the UK. 

Kit Contents



Double DIN Fascia Plate

Fascia Brackets & fitting accessories

Steering Wheel Control Interface (not included with CT23RT09 Fascia)

Aerial Adapter (not included with CT23RT09 Fascia)

FITTING GUIDE

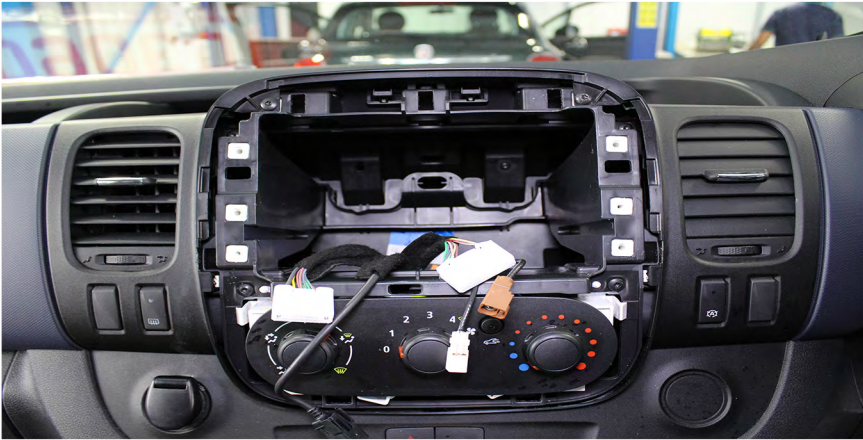
1. We would recommend using your hands or plastic tools and low tack masking tape to avoid damage to the panel. Please remove the panel with a secure grip as shown on the image below



2. Once the panel is removed please extract the screws and the Radio as shown on the image below



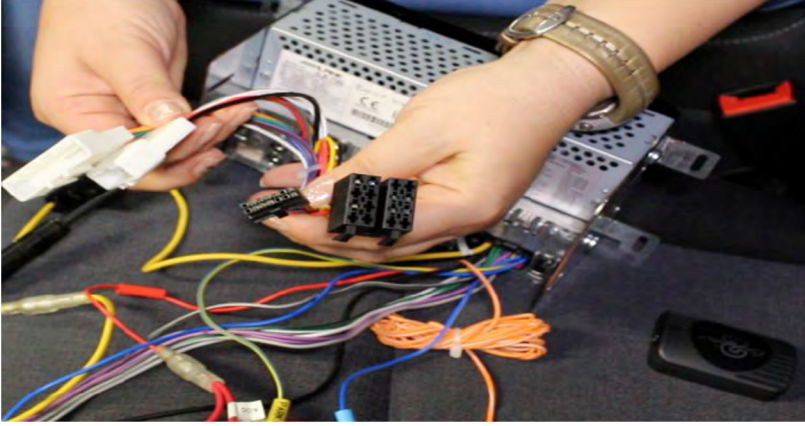
3 Dash without Radio.



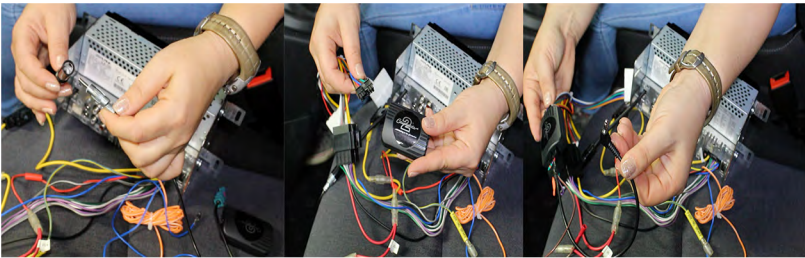
4 Connectors



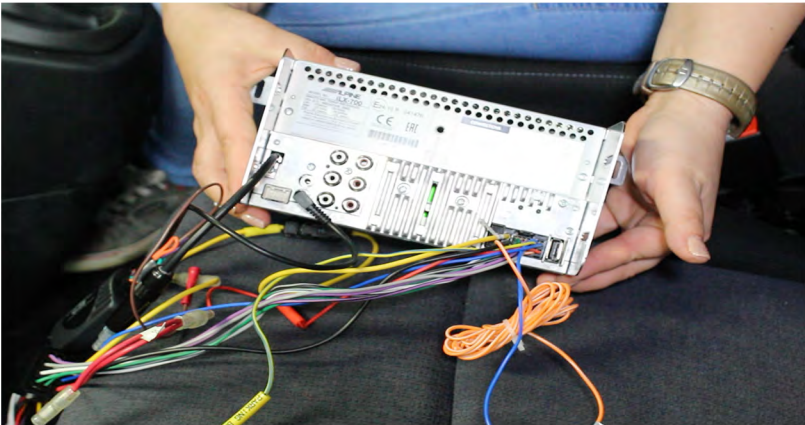
5. Connect the interface between Radio and Car Harness as shown on the images below (please note harness, USB and antenna are not included with this Facia. Process shown is for illustration only)



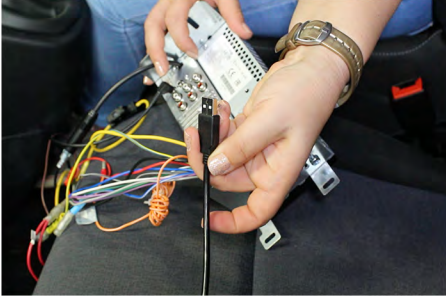
6.



7.



8. Connect the USB adapter to the back of the Radio (this goes to the factory dashboard USB connection)



9. Dashboard USB connection



10. Connect the aerial



11. Attach the brackets to the Radio



12. Once all the connections are in place, insert the new Radio carefully in the dash to avoid damage to the leads. We recommend to try the Radio is working before the screws and fascia are fitted

