



INSTALLATION INSTRUCTIONS FOR PART 95-9306

APPLICATIONS BMW 1-Series 2008-10 3-Series 2006-10

(Non Factory NAV, Doesn't Retain Heated Seat Switches)

95-9306B

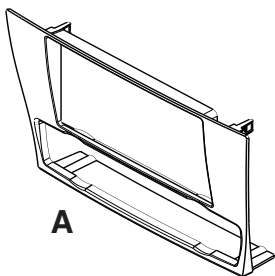
KIT FEATURES

- Double DIN Head Unit Provision
- ISO Stacked Head Unit Provision
- *Painted matte black*



KIT COMPONENTS

- A) Double DIN Trim Plate
- B) Double DIN Brackets
- C) Two 1/2" #8 Pan Head Screws
- D) Two Plastic Snaps



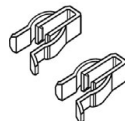
B



C

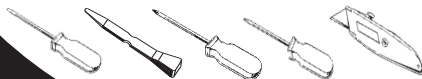


D



TOOLS REQUIRED:

Small Flat Blade Screwdriver/ Panel Removal Tool
Phillips Screwdriver • Torx Screwdriver • Cutting tool or file



1-800-221-0932



www.metraonline.com

© COPYRIGHT 2004-2009 METRA ELECTRONICS CORPORATION



TABLE OF CONTENTS

Dash Disassembly

**- BMW 1-Series 2008-10, 3-Series 2006-10
(Non factory NAV)1**

Kit Assembly

- Kit Preparation

Double DIN Head Unit Provision/ Stacked ISO DIN Head Unit Provision . . 3

Note:

Refer also to the instructions included with the aftermarket radio.



Metra recommends MECP certified technicians.

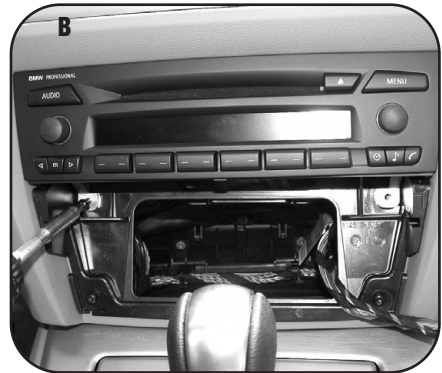
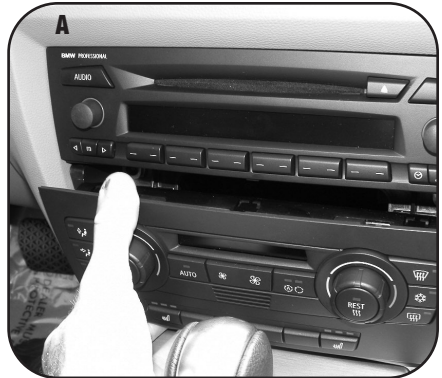


KNOWLEDGE IS POWER

Enhance your installation and fabrication skills by enrolling in the most recognized and respected mobile electronics school in our industry. Log onto www.installerinstitute.com or call 800-354-6782 for more information and take steps toward a better tomorrow.

BMW 1-Series 2008-10/3-Series 2006-10
(NON FACTORY NAV)

- 1 Disconnect the negative battery terminal to prevent an accidental short circuit.
- 2 Carefully unclip and remove the climate controls. (Figure A)
- 3 Remove two Phillips screws from the bottom of the radio and remove. (Figure B)
- 4 Remove the four Torx screws from the sub-dash bracket and remove. (Figure C)

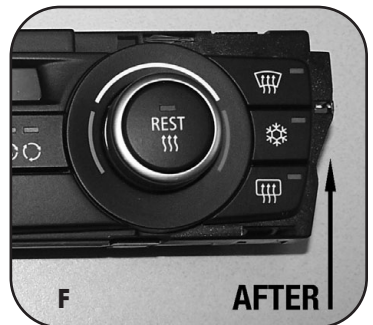
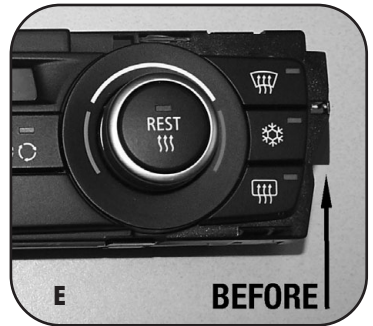


Continued on page 2.

BMW 1-Series 2008-10/3-Series 2006-10
(NON FACTORY NAV)

5 Remove the climate control from the climate control bezel. (Figure D)

6 Cut or file the edges of the climate controls as shown. (Figure E, F)



Continue to kit assembly

KIT ASSEMBLY

1 Mount the DDIN radio to the supplied DDIN brackets using ISO screws supplied with the aftermarket radio.



2 Locate the factory wiring harness in the dash. Metra recommends using the proper mating adapters from Metra and Axxess to intergrate your new radio. Re-connect the negative terminal and test the unit for proper operation.

3 Mount the radio into the dash.
(Figure A)



4 Place the climate controls into the opening below the new radio and push it back as far as it will go, without damaging the dash. (Figure B)

5 Push the included snaps onto the legs on the top of the DDIN trim plate.



6 Clip the two included plastic snaps onto the top legs of the DDIN trim plate. Snap the DDIN trim plate over the radio and use the supplied 1/2" screws to screw into the dash at the bottom. (Figure C)

